

# Pink Sheet

Weekend: May 17th & 18th, 2025

## ***Weekend Plans***

***It's all about the "Bathrooms" this weeknd!!!!!!***

- ***The BRAND NEW men's bathroom beside the Library is OPEN for "Men" this week only!!!!***

***The Women's bathroom in front of the Fellowship Hall will be open.***

- ***Men may use the Men's bathroom near "former" the church offices.***

- *There is a “FAMILY” bathroom in the Baptistry Hallway through Door “E”.*
- *Also, men and women’s bathrooms along the Baptistry Hallway through Door “E”.*
- *Parking along Rt. 466 in front of the church will not be available.*
- *The Café will be in the former Library*
- *Bible Studies will be in the Fellowship Hall*
- *Moring Prayer Team will meet (see Harv Buckner)*

- **The West & North Entrances will be  
“OPEN” this weekend!!!**
- **Important: No Nursery now until end of  
July!!!**

- **“Dirt” Parking Area – Still Closed**
- **We can park in the “grassy area” between Hope Lutheran  
& FCC**

This week:

- Classrooms A & B will be open.
- Parking Lot A has spaces and has golf cart shuttles running.
- **Please ask golf cart drivers to please park on the grass.**
- **Please be careful and patient.**
- **\*\* Important note:** Please only use the **North Main** entrance and the **West entrance**. All side doors within the fences are not available to enter and may be dangerous to walk that way. **Please encourage everyone to use the North and West entrances.**
- **General Construction activity**

- *Please carefully read the additional documents on the Hospitality website discussing construction activity including parking maps.*
- **Parking Lots to be used.**
  - Please check the Hospitality page for “maps” of the latest parking lot options.
- *Mobility challenged individuals can be dropped off at the “Main North Entrance” and golf carts will be available from the remote sections to the Main North Entrance and West A doors.*
- **Entrances and Exits closed.**
  - The only weekend entrances are Main North Entrances and West door is now re-opened.
  - **During the weekdays** the primary entrance to the church will be **Main North Entrance**.
  - All doors can be exited **but use “extreme” caution**, some will exit into a construction area with no trespassing.
- **Rooms closed for meetings this week. Keep an eye on this section for room closures to begin shortly.**
  - *The Fellowship overflow area will be closed.*
  - *Classrooms A & B, will be open*
  - *Classrooms C&D no longer available.*
  - *No nursery until end of July.*
- **Other Key Information**
  - Parking information and directional guidance will be provided as re-routing is required during construction (12+ months).

## Hospitality

*"When we practice hospitality, we're not trying to impress people, we're trying to reflect Jesus to them."*

— Shauna Niequist

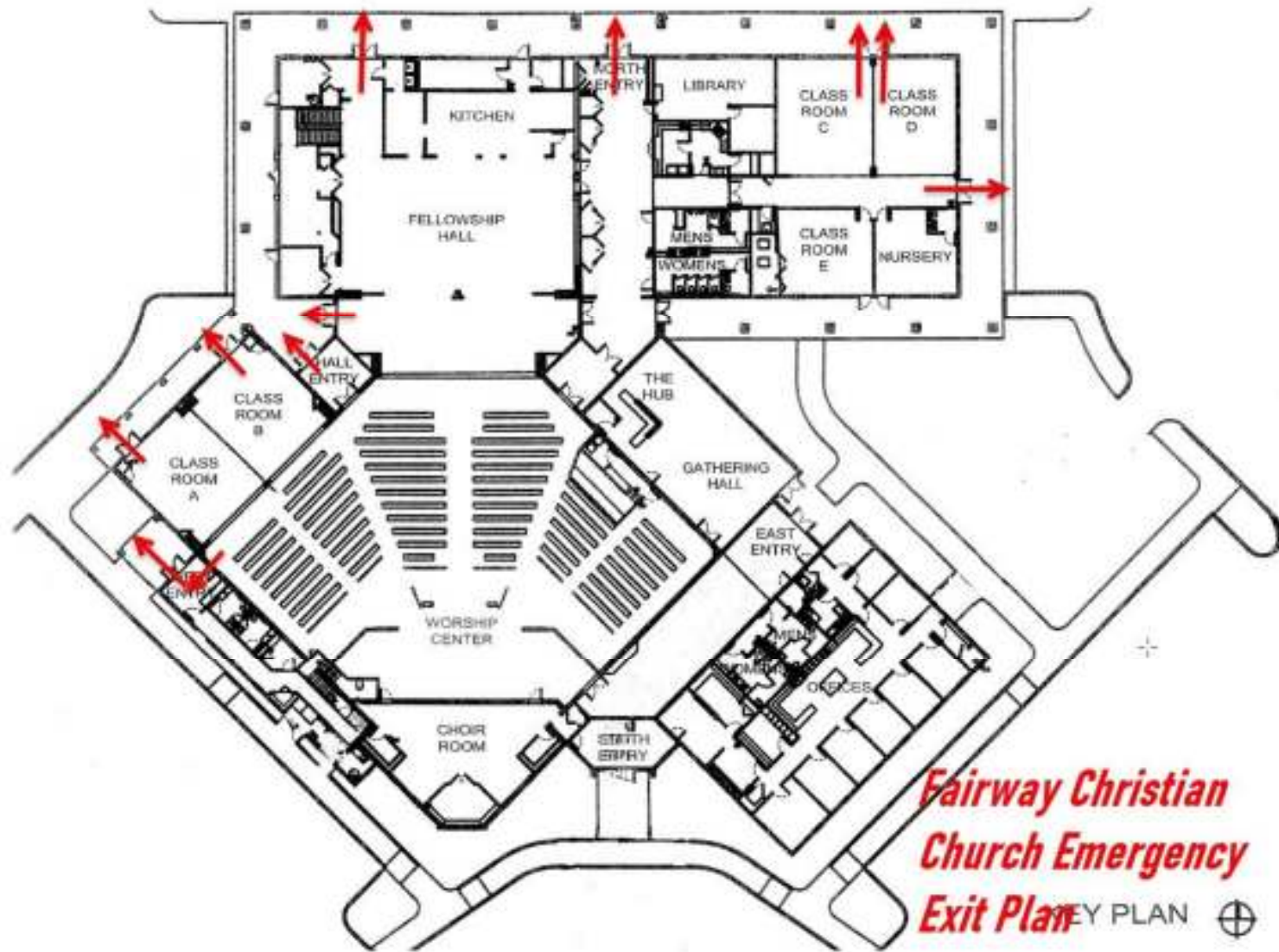
### **3 John 1:5-6**

*"Dear friend, you are faithful in what you are doing for the brothers and sisters, even though they are strangers to you."*

***Blessings, Bob***







***Fairway Christian  
Church Emergency  
Exit Plan*** KEY PLAN ⊕

- **During an evacuation, maintain order, and move quickly and quietly. Follow the nearest evacuation route.**
- **Do not open doors which are hot to the touch or have smoke coming from them.**
- **If smoke is present in the room, stay low and crawl to safety.**
- **If clothing catches fire, drop, and roll on the ground until the flames are extinguished.**
- **If trapped, stay low, yell, or use a phone or cell phone to call for help. This will help firefighters locate you when they arrive.**
- **After evacuation, gather at the designated gathering area.**
- **At the gathering area report any missing person(s) to emergency response personnel as soon as possible along with the last known location of the individual(s).**
- **Do not reenter building until given permission by emergency personnel.**
- **Do not let person(s) get into their cars and leave the area. Allow for emergency vehicles to enter and exit the property as needed.**